

[Friedrich-Wilhelm-Jungius-Cup for gas balloons](#) | [Scoring Area](#) | [Submit Flight Data](#) | [Results](#)

Scoring area and scoring

Scoring area

The outer boundary of the scoring area is defined by coordinates (WGS84), which are connected by a line.

Scoring area KMZ Google Earth

Scoring area CSV



Scoring

Example

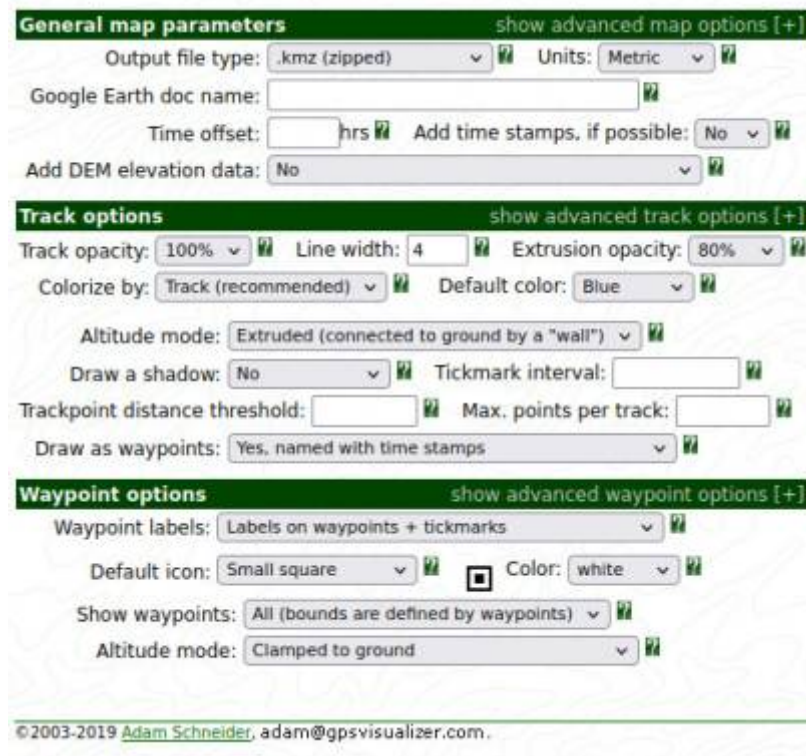
1. Track file

Track file from logger or GPS

2. Conversion for Google Earth

With https://www.gpsvisualizer.com/map_input?form=googleearth

and the following settings:



Important: Altitude mode: Extruded (connected to ground by a „wall“)

2010-08-21_dostz_lindecup_air.kmz

3. Load into Google Earth

[Load the track file](#)

2010-08-21_dostz_lindecup_air.kmz

[and the file of the competition area](#)

jungiuscup_wertungsgebiet_deutschland.kmz

in Google Earth.

4. Search for track point 1

In the example, track point 1 is identical to the starting point.

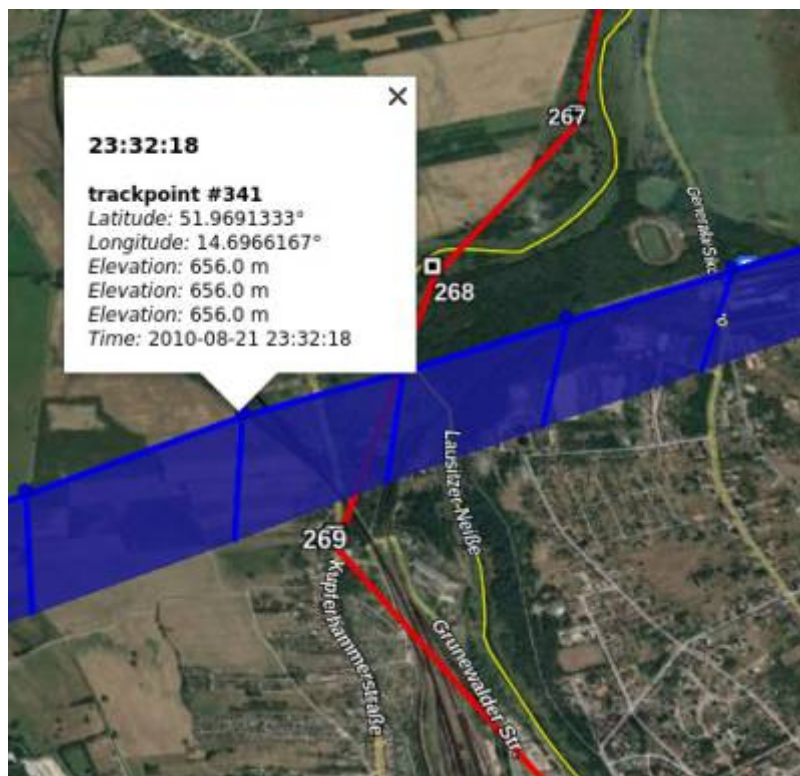


Date: 2010-08-21 UTC: 18:00:36

Coordinates: 51.6246833° N 12.2946500° E

5. Search for track point 2

Track point 2 is the last track point before the boundary of the scoring area. As the points are connected to the ground with a line, it is easy to see which is the last point.



Date: 2020-08-21 UTC: 23:32:18

Coordinates: 51.9691333° N 14.6966167° E

6. Enter in FAI Distance Calculator

[Download the](#)

fai_distance_calculator_v1.0_1.zip

and unzip it. Then open the HTML file in your browser.

FÉDÉRATION AÉRONAUTIQUE INTERNATIONALE
WORLD DISTANCE CALCULATOR
World models available: WGS84 Ellipsoid, FAI Sphere
[\(operation instructions available at the end of this page\)](#)

Input = Lat/Longs to the same Geodetic Datum, preferably WGS84

Lat 1		Long 1	
51.6246833	N	12.2946500	E
Lat 2		Long 2	
51.9691333	N	14.6966167	E

Distance Units: Earth model:

Output = true courses, then shortest distance on the surface of the selected world model

Course 1-2 (deg)	Course 2-1 (deg)	Shortest distance
76.035705483326	257.92334196397	170.073164090674

Attention: Set Longitude to E.

After entering the coordinates, press COMPUTE and the result appears at the bottom right.

Result

Distance within the scoring area 170.07 km

From:

<https://www.ballon-bitterfeld.de/bivfl/> - **Ballonsport im Bitterfelder VfL e.V.**

Permanent link:

<https://www.ballon-bitterfeld.de/bivfl/doku.php/en/jungiuscup/wertungsgebiet>

Last update: **2024/02/18 09:43**

